

www.planet.com.tw



Ethernet Switch Solution



cartronicgroup

DISTRIBUIDOR
OFICIAL

Advantages of PLANET Ethernet Switches

- Powerful **100Gbps** Ultra-high-bandwidth Solution for Big Data System
- IPv4 and IPv6 Hardware Layer 3 Routing
- User-friendly Management with **Unique LCD Touch Screen**
- Efficient Single IP Management
- **2.5G Fiber Speed** Solution
- **Centrally managed** by PLANET Universal Network Management System
- **CloudViewer APP Supported***

**For specific models only*



Ethernet Switches Family



- Layer 3 Core Switches/Chassis



- Touch LCD Managed Switches



- Stackable Managed Switches



- Managed Ethernet Switches



- Metro Fiber Switches



- Unmanaged Ethernet Switches

*Remark: **Industrial-grade Ethernet Switches** and **PoE Switches** are fully introduced in their respective sales guide.*

Product Features

Layer 3 Core Switch/Chassis

Layer 3 100G Fiber Managed Switch

- ◆ Layer 3 10~100Gbps static routing with 24/12-port SFP+ fiber interfaces
- ◆ 100G QSFP28 fiber interface compatible with 40G QSFP+ (XGS-6350-24X4C)
- ◆ 40G QSFP+ fiber interface (XGS-5240-24X2QR)
- ◆ 1.28Tbps, 256/640Gbps switching fabric
- ◆ SSH/ ACL/ WRR/ RADIUS authentication
- ◆ IPv4/IPv6 static routing, RIP & OSPF
- ◆ Cisco-like command with console interface



XGS-6350-24X4C

(24-port 10G SFP+ and 4-port 100G QSFP28)



XGS-6350-12X8TR

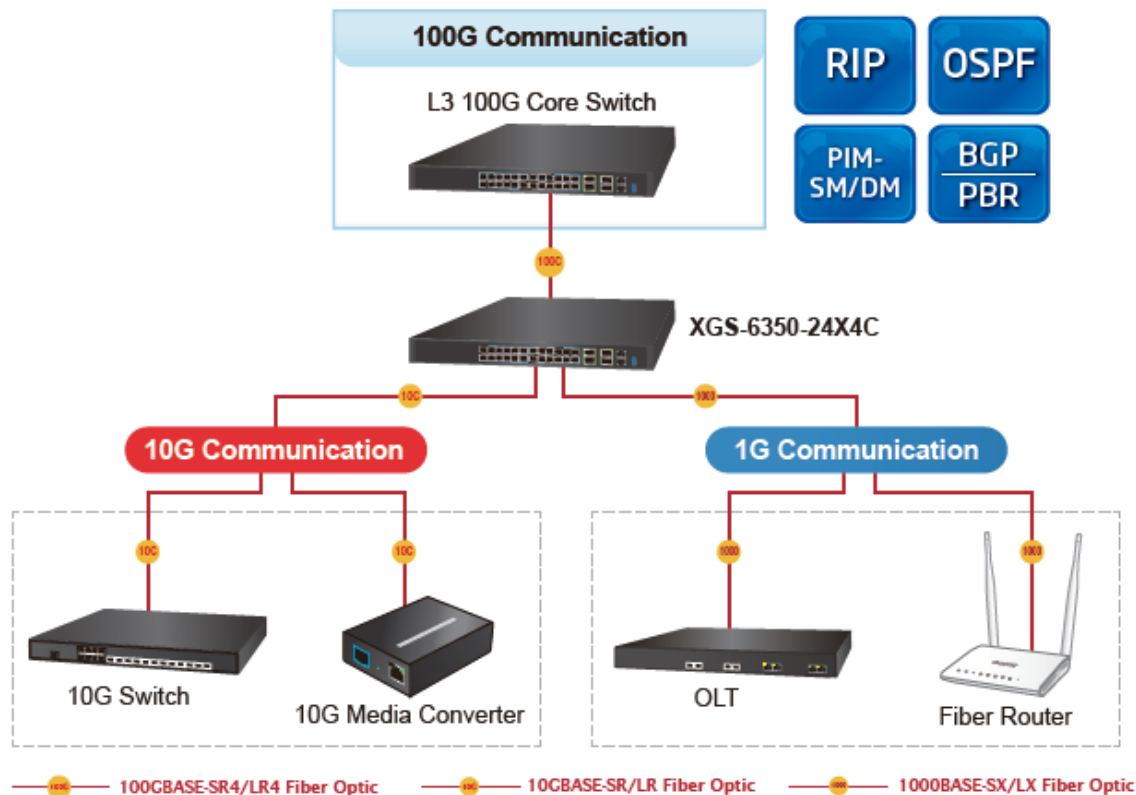
(12-port 10G SFP+, Dual AC redundant Power)



XGS-5240-24X2QR

(24-port 10G SFP+, 2-port 40G QSFP+, Dual DC redundant power)

High Performance 100G Servers Service



Layer 3 Telecom Switch/Chassis

◆ Target markets: High Performance Network Service

- ◆ ISP/Telecom/Network Service Provider
- ◆ Tender Market
- ◆ Government, Campus, Hospital
- ◆ Enterprise Secure Office, Factory

◆ Product Features

- ◆ 10Gb Ethernet
- ◆ IPv6/IPv4 Dynamic Routing
- ◆ IPv6/IPv4 Multicast Routing
- ◆ IPv6/IPv4 Tunneling
- ◆ IPv6/IPv4 Dual Stack
- ◆ Enhanced Security
- ◆ Software/Hardware stacking



CS-6306R

6-slot Layer 3 IPv6/IPv4 Routing Chassis Switch



XGS3-24242

**24Gbps SFP + 16-Port Shared TP
+ 4 10G SFP+ L3 Stackable Managed Switch**



XGS3-24042


**24-Port Gigabit + 4-Port 10G SFP+
Layer 3 Stackable Managed Switch**

6-slot Layer 3 IPv6/IPv4 Routing Chassis Switch



CS-6306R

Optional Switch Modules

Modules		Type	10/100/1000 BASE-T	1000 BASE-X SFP	1/10GBASE-X SFP+	40G BASE-X QSFP+
CS6-MCU		Management	-	-	-	-
CS6-S16X		Switch	-	-	16	-
CS6-S24T24S		Switch	24	24	-	-
CS6-S24T8X		Switch	24	-	8	-
CS6-S24S8X		Switch	-	24	8	-
CS6-S48S		Switch	-	48	-	-
CS6-S48T		Switch	48	-	-	-
CS6-S4Q		Switch	-	-	-	4

IPv6/IPv4 Layer 3 Routing Switch



CS-6306R

Chassis Switch Applications - Enterprise

High Performance

High Density

Flexibility

Scalability

Reliability

ISP / Telecom



Enterprise



PLANET Chassis-based Switch
CS-6306R

Campus / Hospital



Data Center



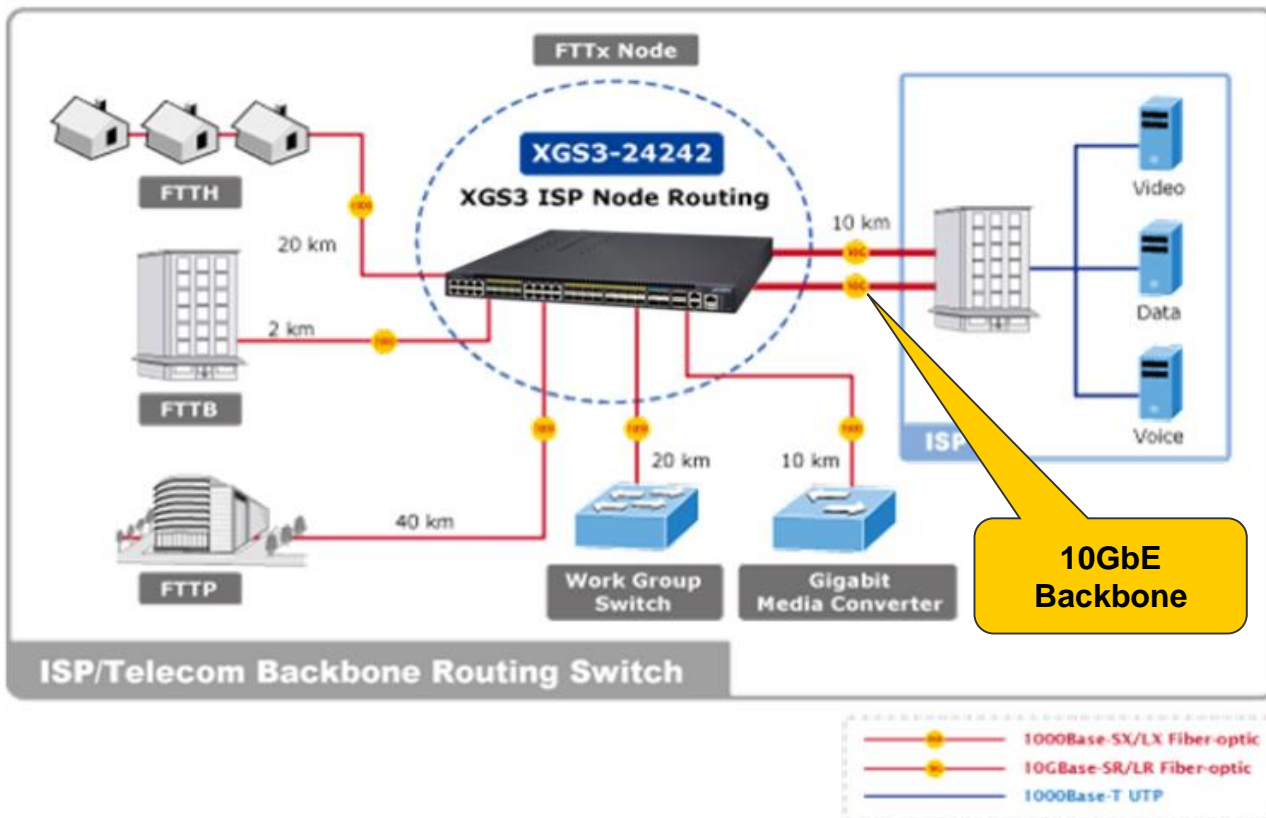
Campus / Hospital



Data Center



10G Switch Applications - ISP/Telecom



Product Features

Stackable Managed Switch

Enterprise Network Stacking Management



**Static
Routing**

OSPF

RIP

**IGMP/MLD
Snooping**

**IPv4/IPv6
Management**

Layer 3 Stackable Managed Switch

- ◆ L3 dynamic routing, multicast routing
- ◆ 4-port **1/10G SFP+** uplink
- ◆ **Redundant power design** (SGS-6341-16S8C4XR)
- ◆ Software/ Hardware stacking
- ◆ Single IP Management up to 4 units with redundancy (Hardware stacking)
- ◆ 802.3at PoE+ compliant and **intelligent PoE management** (SGS-6341-24P4X)
- ◆ Efficient and Secure Management
- ◆ Target for enterprise backbone



SGS-6341-16S8C4XR



SGS-6341-48T4X

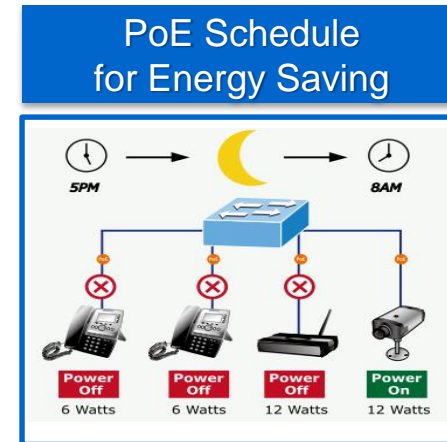
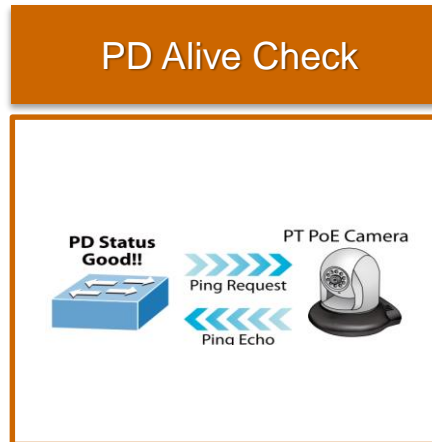
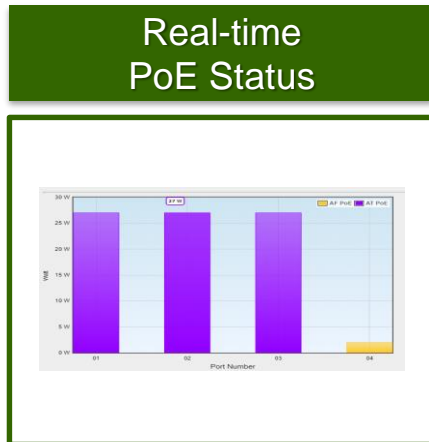


SGS-6341-24T4X

SGS-6341-24P4X (370W PoE Budget)

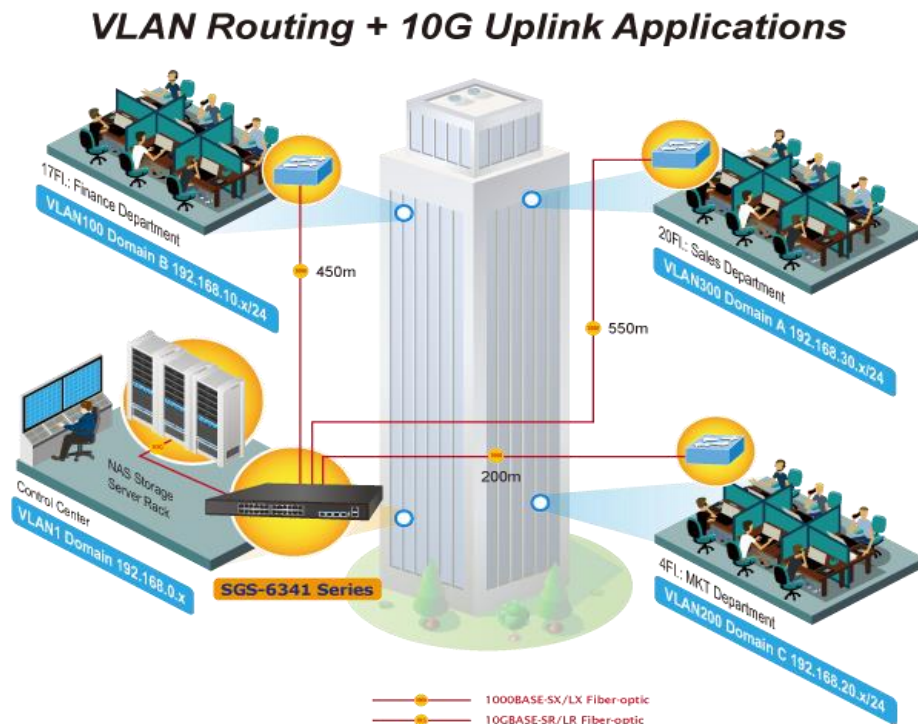
Intelligent PoE Management

- ◆ **Real-time** powered devices status
- ◆ **Monitor** connected PD status; **the PoE port power can be immediately resumed** to bring the PD back to work if disconnected.
- ◆ PoE devices can be **scheduled to turn off/on** for energy saving.



Layer 3 Stackable Managed Switch Application

- ◆ To separate different departments with dynamic routing function



Layer 2+ Stackable Managed Switch

- ◆ **Hardware-based two 10G SFP+ Stacking ports**
 - ◆ Stacking up to **6** units
 - ◆ Stacking up to **288** Gigabit Ethernet ports (*SGS-5240-48T4X*)
 - ◆ Stacking up to **144** PoE+ ports (*SGS-5240-24P4X*)
 - ◆ Stacking up to **12** high-capacity 10G SFP+ Uplink ports
- ◆ **AC + DC redundant power** (*SGS-5240-20S4C4XR*)
- ◆ **DHCP Snooping/ARP Inspection and IP Source Guard**
- ◆ **IGMP Snooping, MLD Snooping support**
- ◆ **802.1x/RADIUS/TACACS+ Authentication**
- ◆ **Secure SSL/SSH/SNMPv3 Management**
- ◆ **Single IP management**
- ◆ **IPv6/IPv4 Layer 3 Static Routing**
- ◆ **Supports IEEE 802.1Q VLAN**



SGS-5240-20S4C4XR



SGS-5240-24T4X



SGS-5220-48T4X



SGS-5220-24P4X

Product Features

Metro Fiber Switch

Managed Metro Ethernet Switch

- ◆ IPv6/IPv4 Layer 3 Static Routing and **OSPFv2**
- ◆ **IPv6/IPv4 dual stack management**
- ◆ Fully **front panel access** design
- ◆ Layer 2/3/4 Access control list and port security
- ◆ **ERPS** (Ethernet Ring Protection Switching)
(for MGSW-28240F, MGSD-10080F)
- ◆ STP/RSTP/MSTP connection redundancy
- ◆ Intelligent SFP Diagnosis Mechanism
- Digital Diagnostic Monitor (**DDM**)
- ◆ **Cybersecurity**
- ◆ DI/DO for event and alarm
- ◆ **Dual power system** for **power redundancy**
 - ◆ - 36V ~ -72V DC ◆ 100V ~ 240V AC
- ◆ - 10 to 60 degrees C operating temperature



MGSW-28240F
(24-port + 4-port 10G Fiber)



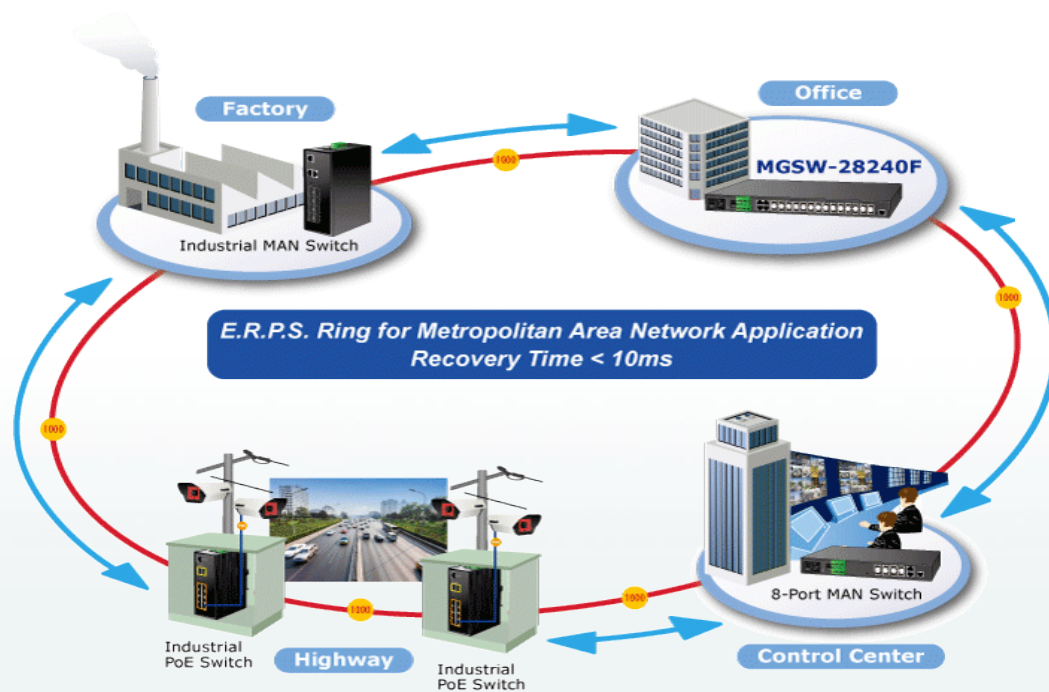
MGSW-24160F
(16-port Fiber)



MGSD-10080F
(8-port Fiber)

Features **ERPS**

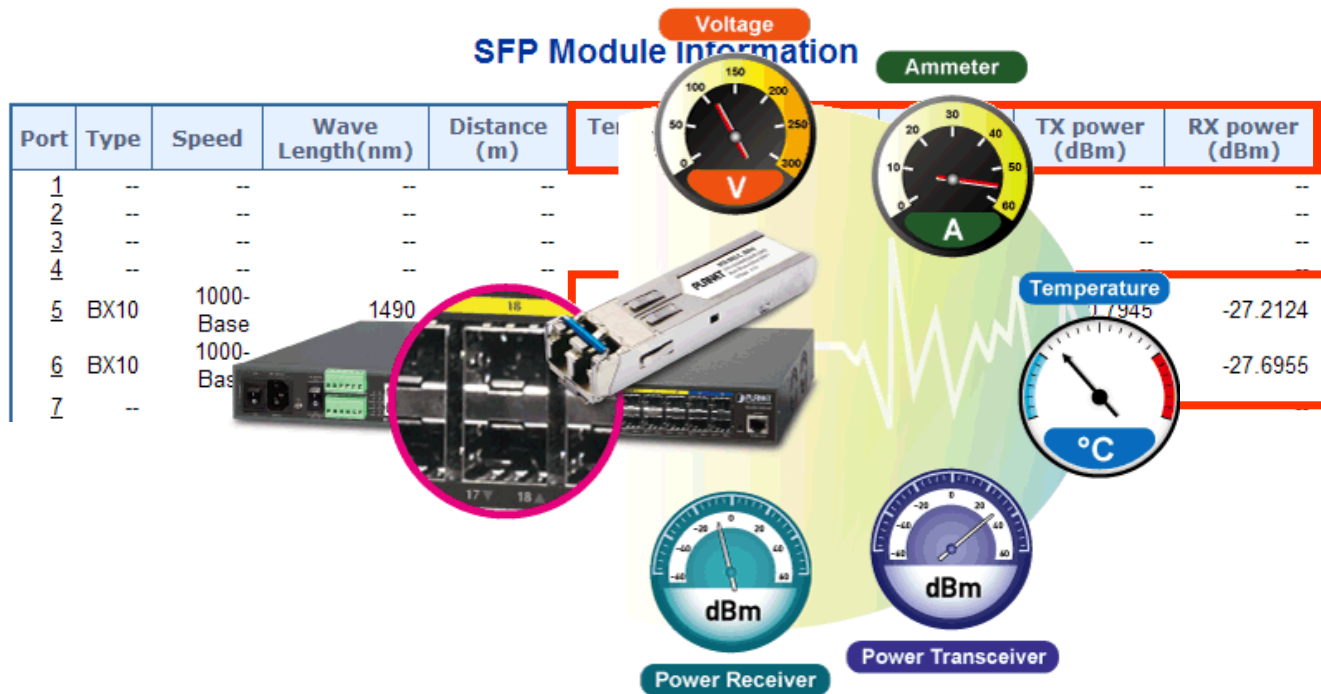
- ✓ **ERPS Ring for Network Redundancy**
- ✓ **Strong rapid self-recovery capability**
- ✓ **10ms recovery time**



Features DDM

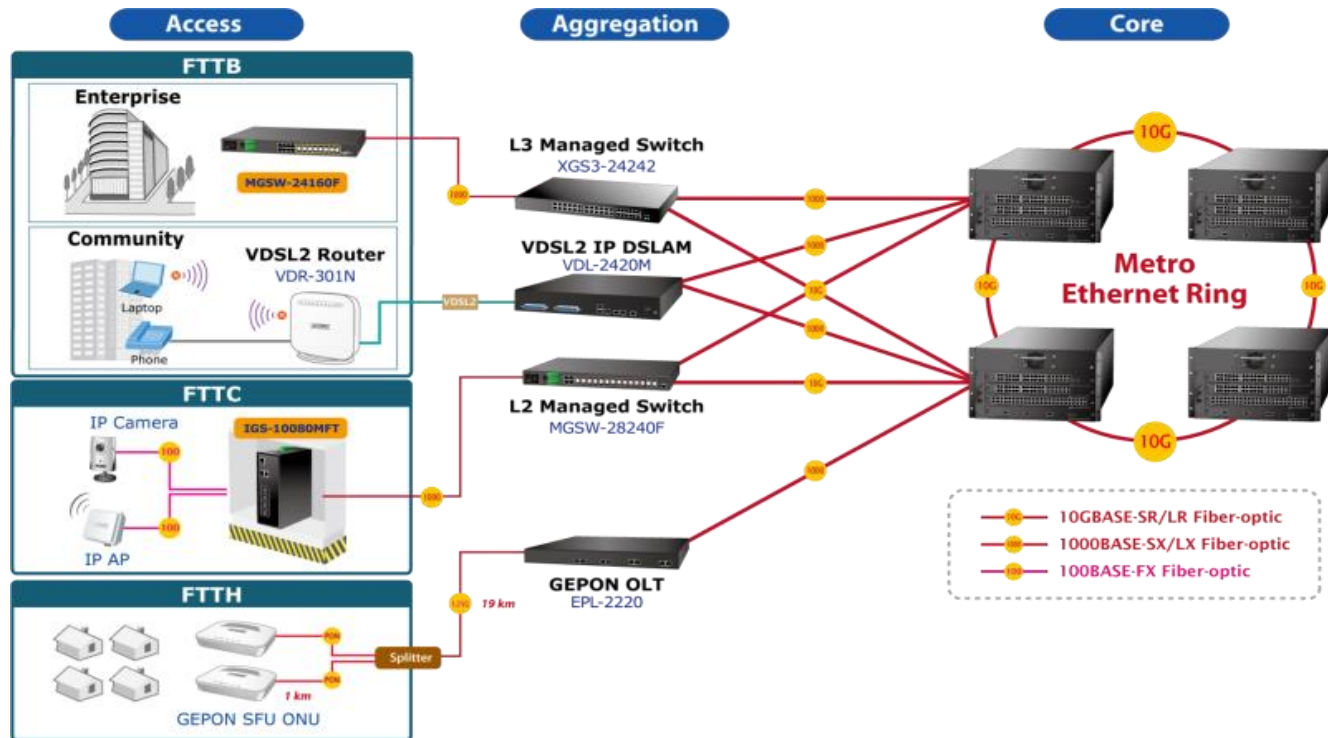
◆ Digital Diagnostic Monitor (DDM)

- ◆ Efficient management by real-time monitoring of the SFP status



Metro Ethernet Application

- ✓ High Density
- ✓ High Performance
- ✓ Highly Reliable



Product Features

Touch LCD Managed Switches

Unique Touch LCD Design

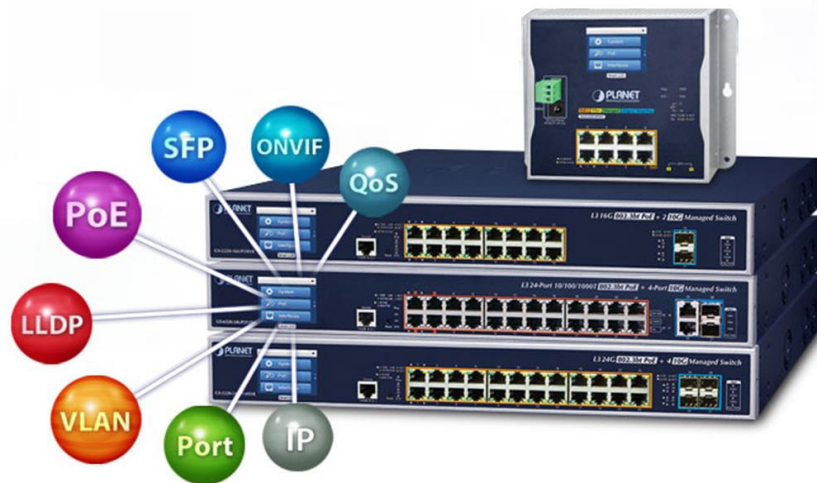
◆ Optimize network efficiency with a simple touch

- ◆ LCD touchscreen for real-time network and PoE management
- ◆ Quick trouble shooting and maintenance

◆ Advanced specifications

- ◆ **802.3bt PoE++**, 802.3at PoE+ compliant
- ◆ Layer 3 management, **10G SFP+ uplink**
- ◆ Industrial Flat-type design
- ◆ Redundant power protection
- ◆ Centrally managed by PLANET Universal Network Management System
- ◆ CloudViewer APP supported*

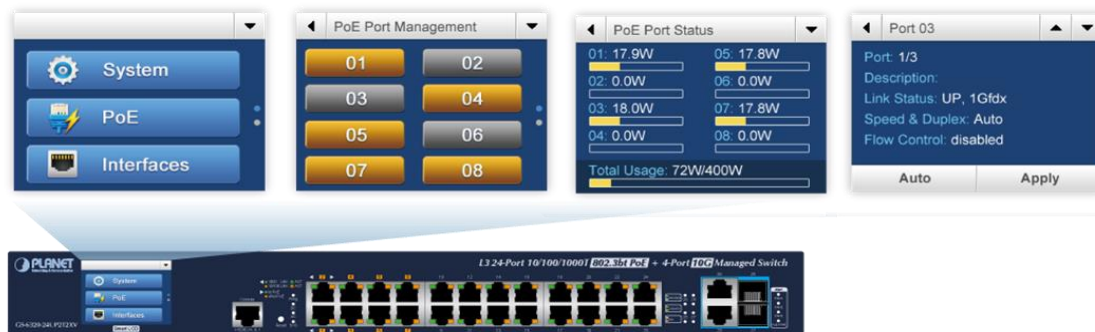
*specific models: GS-6320-24UP2T2XV, GS-5220-24UPL4XV, GS-5220-24UPL4XVR



Smart and Intuitive LCD Control

◆ Color touch panel facilitates network and PoE PD management

- ◆ System IP address, VLAN and QoS configuration
- ◆ PoE management and status
- ◆ Port management and status, and SFP information
- ◆ ONVIF device list and status
- ◆ Cable diagnostic and remote IP ping
- ◆ Reboot, factory default and save configuration
- ◆ PIN code access protection



Touch LCD Layer 3 Aggregation Switches

- ◆ Layer 3 IP dynamic routing protocol and **OSPFv2** supported
- ◆ **95W IEEE 802.3bt PoE++ injectors** (GS-6320-24UP2T2XV)
- ◆ 2/4 x **1/10G SFP+** slots for uplink
- ◆ 100~240V AC, 36~60V DC redundant power design
- ◆ ITU-T G.8032 **ERPS** function, recovery time **less than 10ms**
- ◆ Cybersecurity features: **SSH** and **SSL** management
- ◆ IPv6/IPv4 Web, Telnet and SNMP management



GS-6320-24UP2T2XV
(600W PoE Budget)



GS-5220-16UP2XV(R)
(400W PoE Budget)



GS-5220-24T4XV(R)

Touch LCD Layer 2+ Managed Switches

- ◆ Layer 3 IP static routing supported
- ◆ **75W IEEE 802.3bt PoE++ injectors**
(GS-5220-24UP series)
- ◆ **2/4 x 1/10G SFP+** slots for uplink
- ◆ 100~240V AC, 36~60V DC redundant power design
- ◆ **ITU-T G.8032 ERPS** function, recovery time **less than 10ms**
- ◆ Cybersecurity features: **SSH** and **SSL** management
- ◆ IPv6/IPv4 Web, Telnet and SNMP management



GS-5220-24UPL4XV(R)
(600W PoE Budget)

GS-5220-24UP4XV(R)
(400W PoE Budget)



GS-5220-16P2XV(R)
(220W PoE Budget)



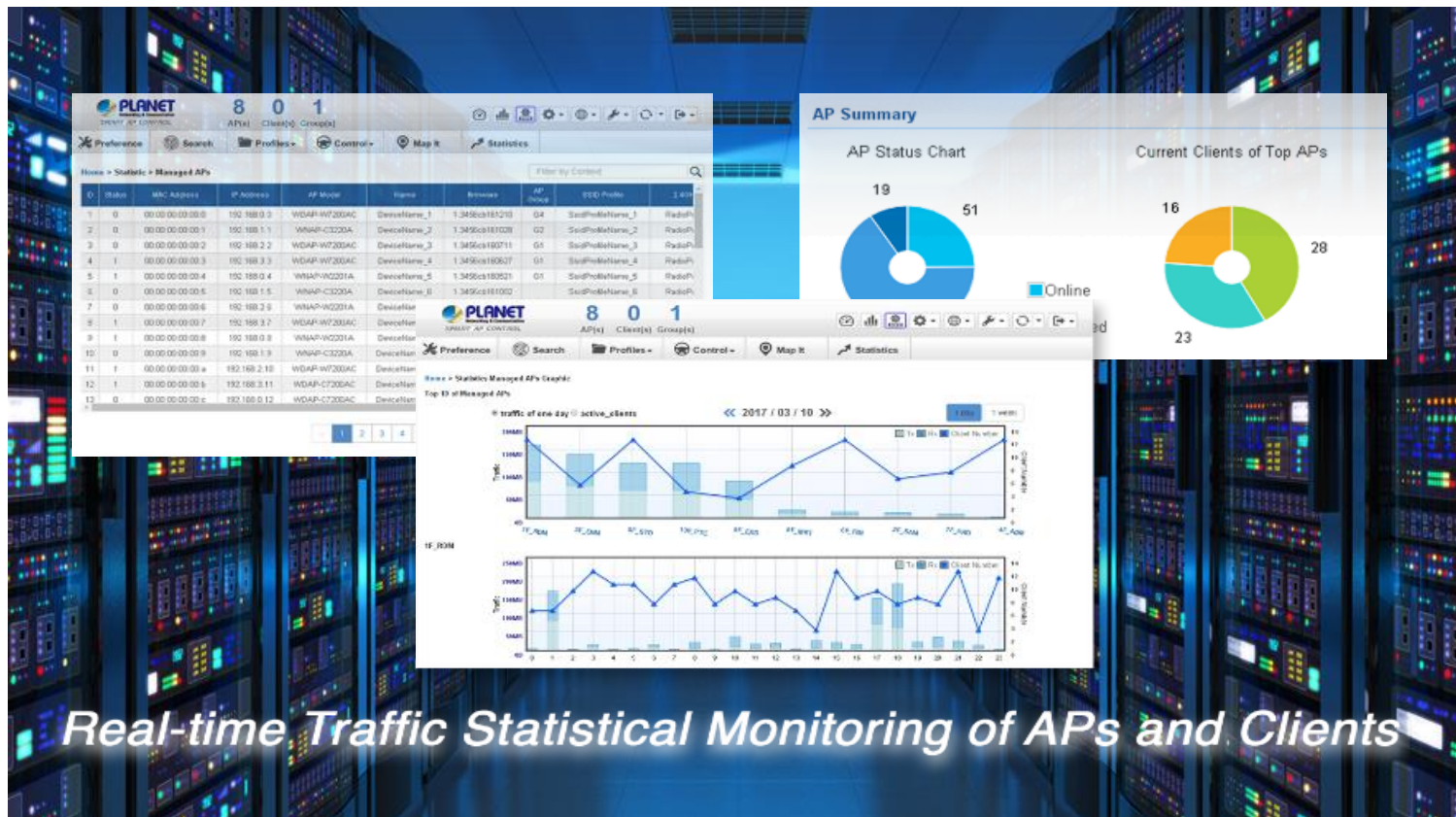
GS-5220-16T2XV(R)

Touch LCD Wireless LAN Managed Switch

- ◆ 4-port **10G SFP+ uplink** capability
- ◆ **LCD touch screen** with easy management
- ◆ **Intelligent PoE Management**: AP alive check, PoE schedule, Scheduled AP power recycling
- ◆ ERPS ring data recovery time < 50ms
- ◆ L2+/L4 IP management
- ◆ **Free system upgrade** and **AP bulk upgrade** capability
- ◆ **Wireless LAN Management**
 - ◆ Management of **64 APs**
 - ◆ **Dashboard** view of wireless network status at-a-glance
 - ◆ Customized Profile available
 - ◆ Multi-AP **auto provisioning** in one click
 - ◆ Simplifies Cluster Management
 - ◆ **Zone Plan** optimizes AP deployment with actual signal coverage
- ◆ **Network Management**
 - ◆ **SNMP** v1, v2c, and v3 management
 - ◆ Supports PLANET DDNS/Easy DDNS
 - ◆ **Cloud management via PLANET DDNS**



Real-time Statistics by WS-2864PVR



Real-time Traffic Statistical Monitoring of APs and Clients

Flat-type Touch LCD L2+ Managed Switch

◆ User-friendly 2.4-inch Touch Color LCD Display

- ✓ Port Management
- ✓ Port Status
- ✓ PoE Port/PD Management (WGS-5225-8P2SV)
- ✓ Cable Diagnostic

◆ 2 x 100/1000X SFP slots for Fiber-optical Link

◆ ERPS Ring Data Recovery time < 10ms

◆ IPv4/IPv6 Layer 3 static routing

◆ Cybersecurity protection

◆ Supports Modbus TCP/IP Protocol

◆ 802.3at PoE+ with intelligent PoE management (WGS-5225-8P2SV)

◆ Supports ONVIF detection (WGS-5225-8P2SV)

◆ -20 ~ 70 degrees C operating temperature

● PoE Port Management



WGS-5225-8P2SV



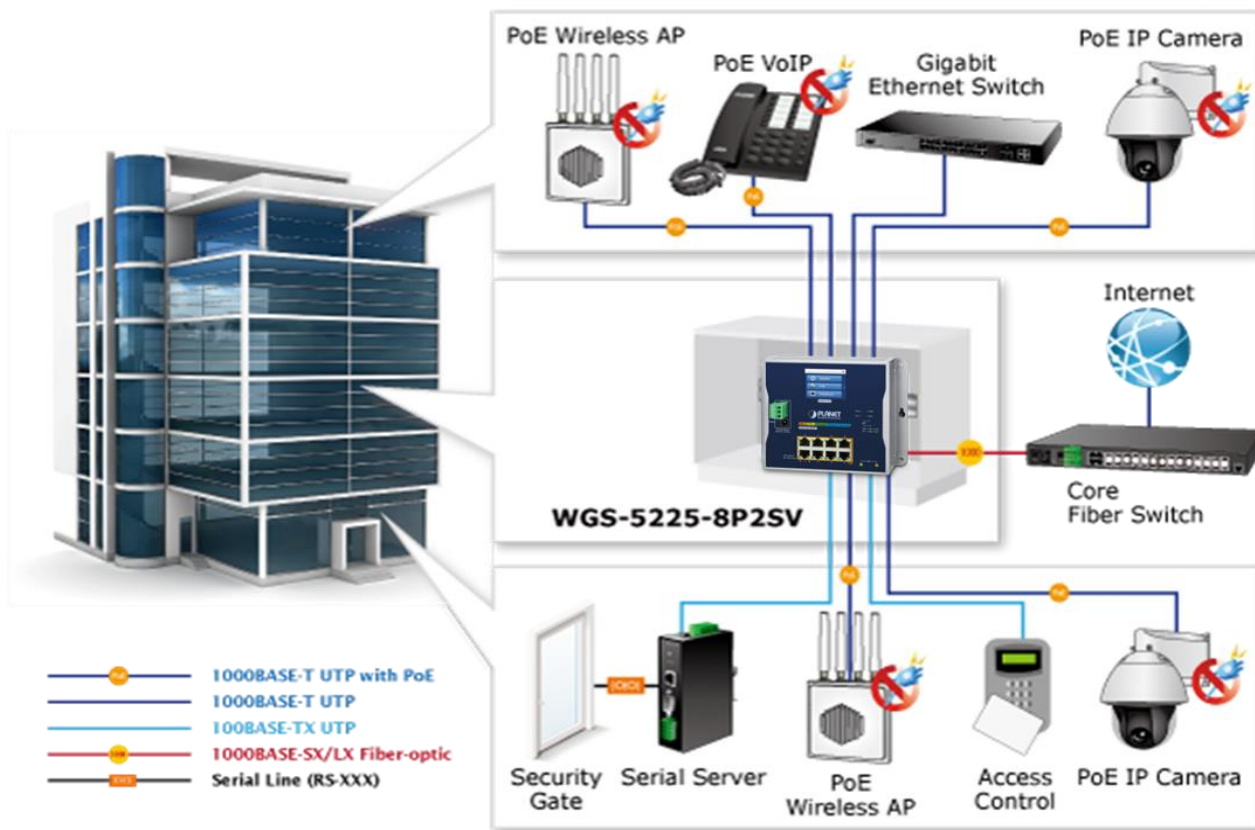
● Port Management



WGS-5225-8T2SV



Flat-type Touch LCD Switch Application



Product Features

Managed Ethernet Switches

Layer 3 Aggregation Switches with 10G uplink

- ◆ Layer 3 **Static routing** and **OSPFv2** supported
- ◆ **95W IEEE 802.3bt PoE++** injectors
- ◆ 2/4 x **1/2.5/10G SFP+** slots for uplink
- ◆ Redundant power design without PoE functions
- ◆ ITU-T G.8032 **ERPS** function, recovery time **less than 10ms**
- ◆ Cybersecurity features: **SSH** and **SSL** management
- ◆ Access methods with web GUI, telnet and console



GS-5220-24UP4X Series (400W PoE Budget)
GS-5220-24UPL4X Series (600W PoE Budget)



GS-5220-16UP4S2X Series (400W PoE Budget)



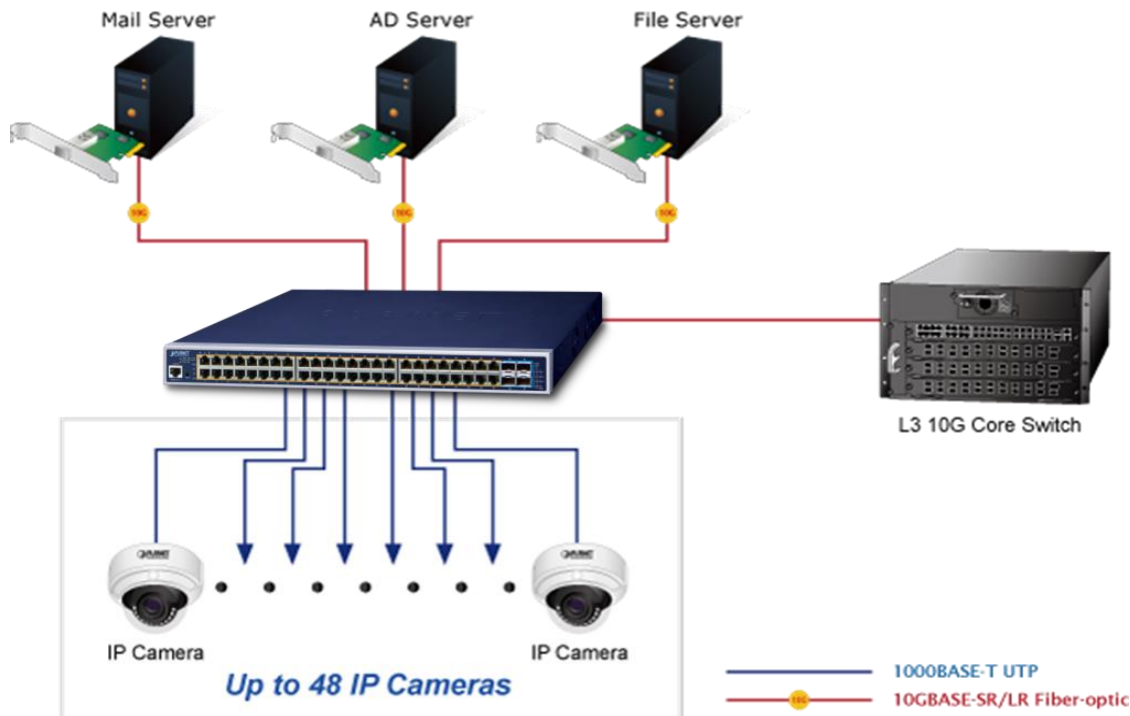
GS-5220-48P4X Series (400W PoE Budget)
GS-5220-48PL4X Series (600W PoE Budget)



GS-5220-8UP2T2X (240W PoE Budget)

Layer 3 Aggregation Switch Application

◆ Excellent 10Gbps High Bandwidth Solution to Core Network



Layer 2+ IPv6 Backbone Switch

- ◆ Telecom class Gigabit solution for Enterprise Backbone and Data Center Networking
- ◆ **IPv6/IPv4 Layer 3 Static Routing**
- ◆ 24-Port 10/100/1000BASE-T, 4 shared **SFP** slots
- ◆ 24-Port 100/1000BASE-X SFP slots
- ◆ High Performance Full Wire-Speed Forward
- ◆ IPv6/IPv4 Dual Stack Management
- ◆ Strong IPv6/IPv4 **Multicast** Protocols
- ◆ IPv6/IPv4 RADIUS, ACL and QoS
- ◆ Advanced Secure Network Management



GS-5220-16S8C
GS-5220-16S8CR

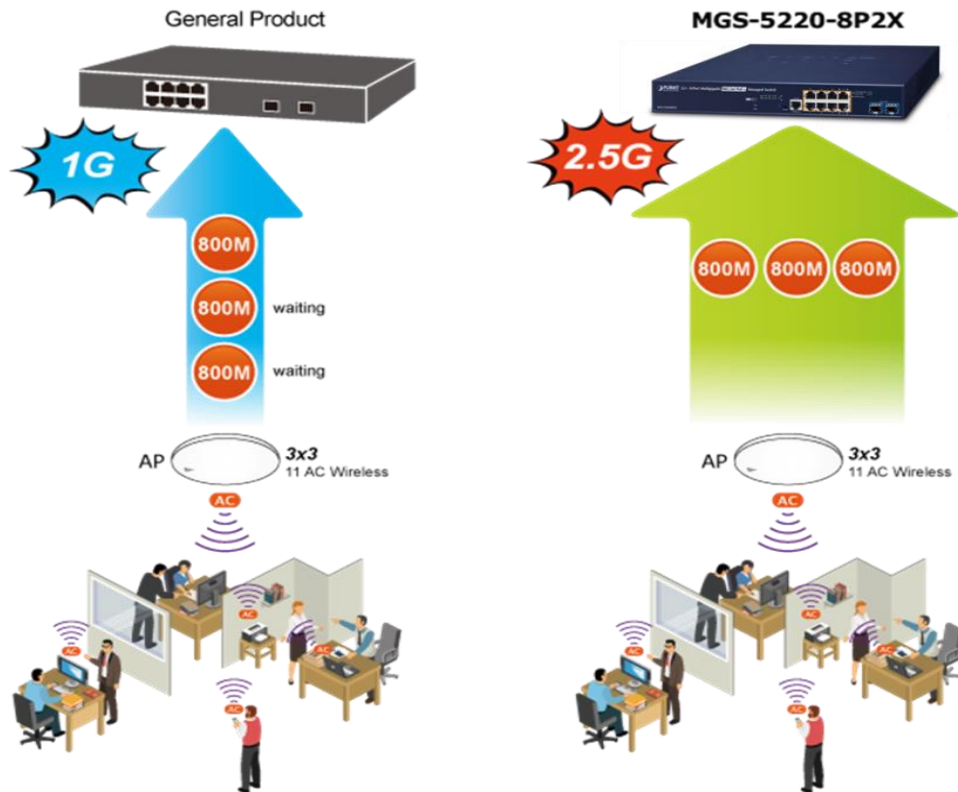
Multigigabit Layer 2+ Managed Switch

- ◆ 8-port 100/1000/**2500**BASE-T with 802.3at PoE
- ◆ 2-port **1/10G SFP+** slots for uplink, flexible for Fiber-Optic network extension
- ◆ Hardware-based **IPv6/IPv4 Layer 3 Static Routing**
- ◆ **User Privilege** levels control
- ◆ 36W PoE output per port
- ◆ Total **240W** PoE budget
- ◆ **PoE Schedule/Schedule Power Recycle/PD Alive Check**
- ◆ **PoE Power management**
 - ◆ PoE Port power limit/Total limit to ensure stable system operating
 - ◆ Monitor power usage, current usage, power consumption on Powered Devices
- ◆ **13-inch compact size**
- ◆ **SSH/SSL Secure Management**
- ◆ Integrate Security and QoS for PoE PD operating



MGS-5220-8P2X

Multigigabit PoE+ Switch Facilitates Next-generation AP Deployment



L2/L4 Managed Gigabit Switches

IPv6 Gigabit Backbone Switch



GS-4210-48T4S

48-port Gigabit + 4-port Gigabit SFP

Gigabit Switch



GS-4210-24T2S



GS-4210-16T2S



GSD-1020S



GSD-1002M
(Desktop PoE PD)

802.3at PoE+ Switch



GS-4210-48P4S
(440 watts)



GS-4210-24P4C
GS-4210-24PL4C
(220/440 watts)



GS-4210-24P2S
(300 watts)



GS-4210-16P4C
GS-4210-16P2S
(220 watts)

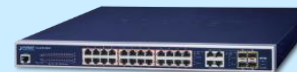


GS-4210-8P2T2S
(240 watts)

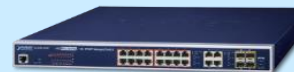


GS-4210-8P2S
(120 watts)

802.3bt PoE++ Switch



GS-4210-24UP4C
(600 watts)



GS-4210-16UP4C
(400 watts)

48-port Managed Switch

- ◆ 48-port Gigabit Port with 4-port 1000X SFP
- ◆ **IPv6**/IPv4 Protocol
- ◆ **SSH/SSL** Secure Management
- ◆ IEEE 802.1Q VLAN
- ◆ IEEE 802.1w Spanning Tree Protocol
- ◆ 802.1x/ACL/Port Security Network Access Control
- ◆ IGMP & MLD Snooping



GS-4210-48T4S

16/24-port Managed **PoE++** Switch

- ◆ 16/24-port Gigabit IEEE **802.3bt PoE++** compliant
- ◆ Up to **95 watts** of PoE power on 4-pair UTP
- ◆ 4-port Gigabit TP/SFP combo Managed
- ◆ 400-watt/600-watt PoE Budget
- ◆ **IPv6/IPv4** Web/Telnet/SNMP (v1, v2c, v3)/SSH/SSL Management
- ◆ IEEE **802.1Q VLAN**/ Voice VLAN/ 802.1w Spanning Tree Protocol
- ◆ Bandwidth Control/Storm Control
- ◆ **Layer 3/4 Access Control** List/ Port Security/ 802.1x



GS-4210-24UP4C (**600W** PoE Budget)



GS-4210-16UP4C (**400W** PoE Budget)

L2/L4 Web Smart Switches

- ◆ Full port **802.3at PoE+ injectors**
- ◆ 8/16/24 RJ45 ports and uplink compo ports
- ◆ Web-based management
- ◆ Layer 2 management
- ◆ PoE management
 - ◆ Per port PoE function enable/disable
 - ◆ PoE port power feeding priority
 - ◆ Per PoE port power limit
 - ◆ PD classification detection
 - ◆ PoE Power sequential



FGSW-2624HPS4 (420W PoE Budget)

FGSW-2624HPS (220W PoE Budget)



FGSW-1816HPS (220W PoE Budget)



FGSD-1008HPS (125W PoE Budget)

Product Features

Unmanaged Ethernet Switches

Unmanaged LCD PoE Switch

- ◆ Up to **60 watts** of PoE++ power on 4-pair UTP
(FGSW-2022VHP)
- ◆ 2-port Gigabit TP and 2-port Gigabit SFP for uplink
- ◆ IEEE 802.3at PoE+, **up to 32 watts** per PoE port
- ◆ 2-port Gigabit TP/SFP for uplink
- ◆ LCD with **real-time PoE port status display**,
and **power and alarm alerts**
- ◆ Auto-negotiation and auto MDI/MDI-X
- ◆ Automatic address learning and address aging
- ◆ Plug and Play design

● 802.3bt PoE++ Switch



FGSW-2022VHP

(4-port PoE++ , 12-port PoE+,
300W PoE Budget)

● 802.3at PoE+ Gigabit Switch



GSW-2620VHP

(24-port PoE+, 300W PoE Budget)



GSW-1820VHP

(16-port PoE+, 300W PoE Budget)



GSD-1222VHP

(8-port PoE+, 120W PoE Budget)

● 802.3at PoE+ Fast Ethernet Switch



FGSW-2622VHP

(24-port PoE+, 300W PoE Budget)



FGSW-1822VHP

(16-port PoE+, 300W PoE Budget)



FGSD-1022VHP

(8-port PoE+, 120W PoE Budget)

- ◆ **The embedded color LCD on the switch's front panel facilitates the Ethernet management and PoE PD management.**
 - ◆ Port management and status
 - ◆ Switch mode: Standard, VLAN or Extend
 - ◆ PD type: 802.3at, 802.3bt, Legacy
 - ◆ Budget and bandwidth control
 - ◆ PD alive check
 - ◆ Screen saver, fan control and factory default
 - ◆ Security password



Unmanaged Switch Family

Desktop Switches

Gigabit Ethernet



GSD-908HP

(8-port PoE+, 1-port TP, 120W PoE Budget, fanless)



GSD-1008HP

(8-port PoE+, 2-port TP, 120W PoE Budget)



GSD-804P

(8-port Gigabit with 4-port PoE+, 60W PoE Budget)



GSD-604HP

(4-port PoE+, 2-Port TP, 60W PoE Budget)



GSD-504UP

(2-port PoE++, 2-port PoE+, 120W PoE Budget, fanless)



FGSD-1011HP

(8-port PoE+, 2-port TP, 120W PoE Budget)



FSD-1008HP

(8-port PoE+, 120W PoE Budget)



FSD-604HP

(4-port PoE+, 60W PoE Budget, internal AC)



FSD-504HP

(4-port PoE+, 60W PoE Budget)

Fast Ethernet

19-inch Switches



GSW-2620HP

(24-port PoE+, 2-port SFP
240W PoE Budget)



GSW-1820HP

(16-port PoE+,
240W PoE Budget)



GSW-2401

(24-port)



GSW-1601

(16-port)



FGSW-2511P

(24-port PoE+, 1-port SFP
190W PoE Budget)



FNSW-1600P

(16-port PoE+,
125W PoE Budget)



FNSW-2401

(24-port)



FNSW-1601

(16-port)

Desktop Gigabit PoE+ Switch

- ◆ **8-port full Gigabit with 802.3at PoE injector function**
- ◆ **52V DC, 30 Watts PoE power output**
- ◆ **Auto detect powered device (PD)**
- ◆ **Energy Saving technology**
 - ◆ Link down power saving
 - ◆ Intelligent scales power based on cable length
- ◆ **9K Jumbo Frame supports all speeds (10/100/1000Mbps)**
- ◆ **Supports Pre-Energy-Efficient Ethernet (EEE) function (802.3az)**
- ◆ **Safe, reliable power solution for SOHO and SMB**



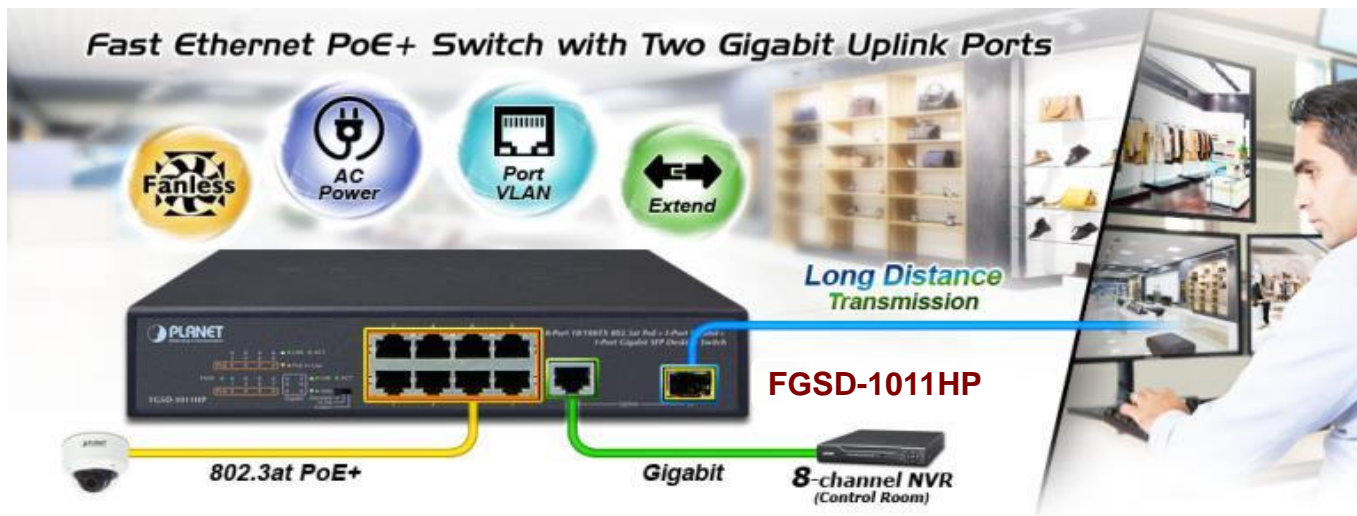
GSD-908HP
(120W PoE Budget)



GSD-1008HP
(120W PoE Budget)

Fast Ethernet PoE+ Switch

- ◆ Facilitates PoE IP camera deployment with power feeding
- ◆ 8-port **802.3at PoE+** with 2-port Gigabit
- ◆ 120-watt PoE budget
- ◆ Auto detects powered device (PD)



Home / SOHO Switch Family

Gigabit Ethernet



GSD-503 (5-port)
GSD-803 (8-port)
(Metal case)



GSD-504 (5-port)
GSD-804 (8-port)
(Plastic case)



GSD-603F
(4-port GbE +
1-port **SFP**)



GSD-805
(8-port, Internal power)



GSD-1603
(16-port, Energy saving)

Fast Ethernet



FSD-503 (5-port)
FSD-803 (8-port)
(Metal case)



SW-504 (5-port)
SW-804 (8-port)
(Plastic case)



cartronicgroup



AÑOS | YEARS
linking with you

Avda. Fuente Nueva, 12. 28703
San Sebastián de los Reyes – Madrid – España.

Teléfono: +34 916 588 760

marketing@cartronic.es

www.grupocartronic.com