

Off-grid 802.3at PoE+ Industrial Renewable Energy Solution

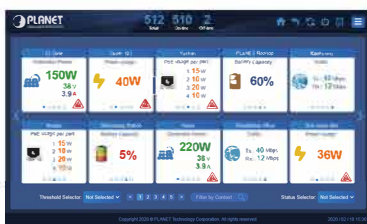


Control up to 512 BSP-360s

Intelligent Renewable Energy Management Controller

PLANET NMS-360, NMS-360V-10/12 Renewable Energy Management Controller can automatically detect up to 512 remote devices in ways that solar PV, battery and PoE port usage are recorded. Besides, traffic logs that are compliant with MQTT Protocol and PLANET Smart Discovery utility are managed. It thus enables administrator to centrally manage a network of up to 512 nodes from a central office, greatly boosting network and power management efficiency. With its user authentication management, the NMS-360 Series enhances data transmission security.

NMS-360 Series Intuitive Management Interface



Device List



Dashboard



Device Information

Industry-leading Integration of PoE Technology and Renewable Power System

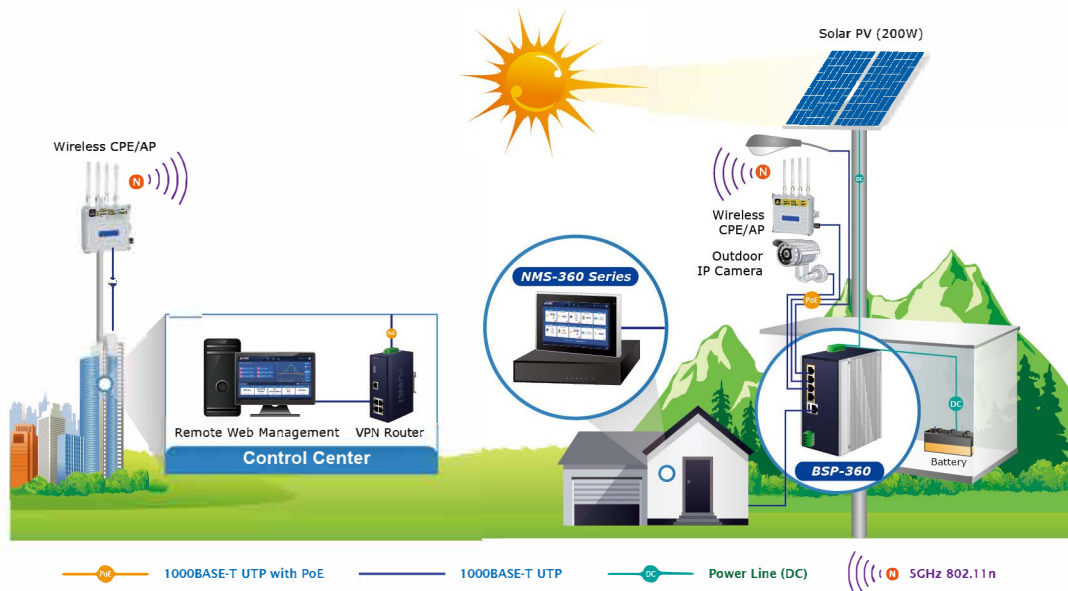
PLANET BSP-360 Industrial Renewable Energy 802.3at PoE+ Managed Switch/Router is designed for deploying surveillance and wireless networks in remote areas. Based on its green technology, the BSP-360 can be charged by renewable energy such as solar power, wind power or hydropower. This helps to economically power and manage IP cameras and APs, no matter how expansive the applications, such as dams, forests, deserts, national parks, animal protection areas and highways, are.



Wireless Connection for Outdoor Long-range Application

PLANET NMS-360 Series Renewable Energy Management Controller allows users to remotely monitor the statuses of the BSP-360 in real time, including green power status, average power usage, instant PoE usage, and so on. Through remote web management, IT administrator at the headquarters will be able to monitor and control those remote powered devices powered by the BSP-360.

The BSP-360's built-in four 802.3at/802.3af PoE ports allow the administrator to flexibly install PoE wireless APs in remote areas, without worrying about locating extra electric outlets. When functioning with a pair of the wireless transmission units, the BSP-360 Renewable Energy PoE Switch/Router can be efficiently managed from a remote control center.



Renewable Energy Management Controller				Renewable Energy PoE Switch/Router	
Model	NMS-360	NMS-360V-10	NMS-360V-12	Model	BSP-360

Product Image



Product Image



Hardware Interface

LCD	-	10" Touch Panel	12" Touch Panel
HDMI	-	1 x HDMI	1 x HDMI
GbE Ethernet	5 x GbE LAN RJ-45	2 x GbE LAN RJ-45	2 x GbE LAN RJ-45
USB	2 x USB 3.0	2 x USB 3.0	2 x USB 3.0
Serial	One RJ45 Console port	-	-
Watt	60W power adaptor (Level 6)	10"- 23.7W	12"- 29W

Software Feature

Number of Managed Devices(BSP-360)	512	512	512
Number of IP cameras	2,048	2,048	2,048
<ul style="list-style-type: none"> Dashboard Setup Wizard Node Discovery Scalability 	<ul style="list-style-type: none"> Event Table Alarm System Site Map User Control 	<ul style="list-style-type: none"> Remote PoE Control Device Provisioning App-like Device Viewing Backup/Restoration/Read 	<ul style="list-style-type: none"> User Account Management

Network Services

DDNS	Supports PLANET DDNS/Easy DDNS
DHCP	Built-in DHCP Server for auto IP assignment to APs
Management	SSL; Web browser (Chrome is recommended)
	SNMP v1, v2c, v3
Discovery	Supports SNMP, ONVIF and PLANET Smart Discovery

Standards Conformance

Regulatory Compliance	CE, FCC
	IEEE 802.3 10BASE-T
Standards Compliance	IEEE 802.3u 100BASE-TX
	IEEE 802.3ab Gigabit 1000BASE-T

LAN	10/100/1000	5
PoE	802.3at	4
PoE Budget		120 watts
PSE Type		End-span
PoE Power Pin		1/2(+), 3/6 (-)
PoE Power Voltage		51V DC
Management		Web/SNMP
System Voltage/ Battery Requirement		24V DC
Power IN		Solar or turbines 24~45V DC
Max. Charge Current		6A
Battery Type		Lead acid type
Features		<ul style="list-style-type: none"> * 24V DC, 1A output load * Battery current status * Low voltage protection & alert * PoE schedule and management

Note:

Check the total power consumption of your device and the sunshine duration of your area from weather bureau for a proper PV. Improper PV could shorten the battery life or provide insufficient power to Renewable Energy PoE Switch/Router.



Avda. Fuente Nueva, 12. 28703 San Sebastián de los Reyes - Madrid - España
 Tel.: +34 916588760. Fax: +34 916588769
 E-mail: marketing@cartronic.es
 www.grupocartronic.com
 www.linkedin.com/company/cartronic-group

